



Connectivity Solutions

Complete or Partial Part #,
Competitor Part # or
Keywords.

Wireless

CATV

Audio & Video

Networking &
Structured Wiring

Military & Aerospace

Test & Measurement

Home

Member Access

Products

Connectors

Microwave Components

CATV Components

Coaxial Cable Assemblies

Structured Cabling & Connectors

Tools & Accessories

Customer Service

Request For Quote

Representatives

Distributors

Literature/Catalog Request

What's New

About Our Brands

Legal Terms

© 2007 All Rights Reserved

Product Detail

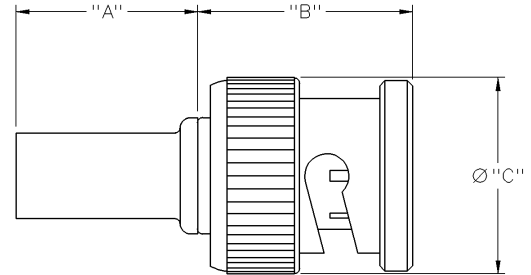


Product Line:	Cambridge (Click for customer service)
Part Number:	CPMC-78-18
Description:	75 Ohm BNC Straight Crimp Type Plug - 3 Piece, Solder or Crimp Contact
Product Family:	BNC 75 OHM
Body Style:	Straight
Color / Finish:	Nickel
Connector A:	BNC
Frequency:	2 GHz
Genders:	Male
Ohm:	75
Product Type:	Cabled
Tool:	24-306P
RoHS Compliant:	Yes

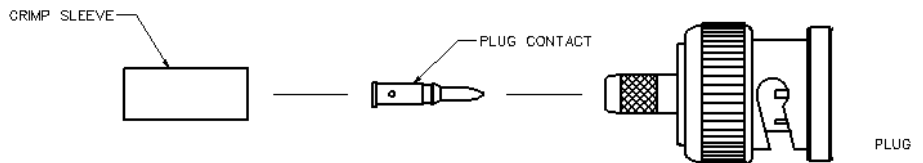
20070523-1523

BNC 75 Ohm

Straight Crimp Type Plug - Solder or Crimp Contact - 3 Piece

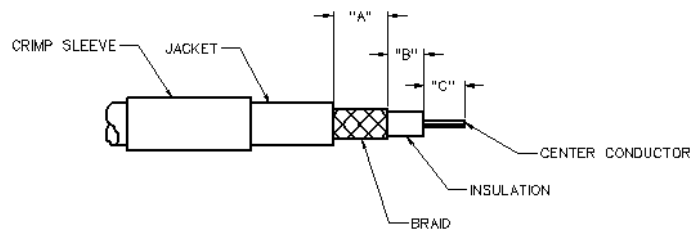


PART NUMBER	CABLE TYPE	"A"	"B"	"C"	CONTACT I.D.	BODY I.D.	FERRULE I.D.
CPMC-78-18	BELDEN 8218, 1855A	.520 (13.20)	.595 (15.11)	.571 (14.50)	.0245 (0.62)	.1065 (2.71)	.175 (4.45)



1. Identify connector parts. (3 piece parts)

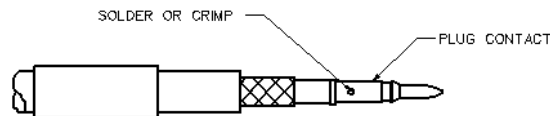
2. Strip cable to dimensions shown. Do not nick braid or center conductor. Tin center conductor if contact will be solder attached. Do not tin center conductor if contact is to be crimp attached. A wire stripper of correct size is recommended for this step. Slide heat shrink (as applicable) and crimp sleeve onto jacket of cable.



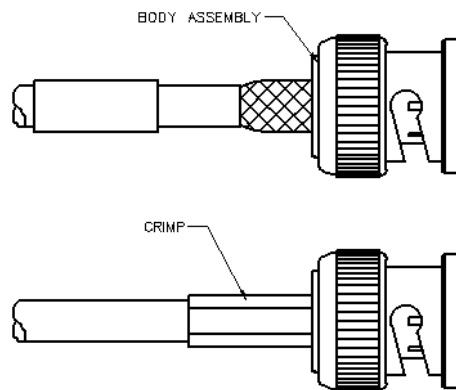
3. Assemble contact onto cable as shown.

Solder Attachment: Solder contact to center conductor through hole using a minimum amount of solder for a good joint.

Crimp Attachment (where applicable): Crimp contact to center conductor using recommended crimp hex.



4. Flare braid and slide body assembly over contact and under braid. Then seat body assembly firmly onto contact. The cable may have to be held in a clamping fixture. Arrange braid uniformly around crimp stem. Slide crimp sleeve forward and crimp using recommended crimp hex. Slide heat shrink forward and shrink (as applicable).



Part Number	Cable	Strip Dimensions			Crimp Sleeve Hex	Contact Crimp Hex	Recommended Crimp Hex
		"A"	"B"	"C"			
CPMC-78-18	BELDEN 8218, 1855A	.315 (8.00)	248 (6.30)	.157 (4.00)	.184 (4.67)	.060 (1.52)	24-306P

75 Ohm Commercial BNC Connectors



INCHES (MILLIMETERS)
CUSTOMER DRAWINGS AVAILABLE UPON REQUEST

The BNC series connector is a commercial quality product that intermates with all standard double bayonet stud BNC designs. All contacts are captivated for ruggedness. The 50 ohm and 75 ohm interfaces are intermateable and provide quick, reliable connections for instrumentation, medical and LAN applications.

Specifications*

75 Ohm BNC

Electrical Characteristics

Impedance: 75 Ohm nominal
Frequency range: 0-2 GHz
Working voltage: 500 volts RMS at sea level
Dielectric withstanding voltage: 1500 volts RMS at sea level
Corona level: 375 volts minimum at 70,000 feet
Contact resistance: Outer - 0.2 milliohms maximum
Center - 2.1 milliohms maximum
Insulation resistance: 5000 megohms minimum

Environmental Characteristics

Recommended temperature range: -55°C to +85°C
Moisture resistance: MIL-STD-202

Mechanical Characteristics

Durability: 500 cycles
Force to engage/disengage: 3 lbs. maximum
Cable retention: 20 lbs., RG-59 C/U cable

Materials

Body: Zinc or brass
Contact: Brass or beryllium copper
Spring Washer: Beryllium copper
Crimp sleeve: Brass
Insulator: TPX
Plating: Body - Nickel (except where noted)
Crimp sleeve - Nickel
Contact - Nickel/Gold